



VAN CARE



B_Line

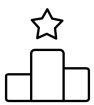
ABOUT US

Van Care has been a leading manufacturer in the field of commercial vehicle Van Racking Kits for many years. Our head office is situated in Beek, The Netherlands & our production site is located in Poland, ensuring the highest standards of manufacturing. Together, we strive to deliver exceptional products that meet the diverse needs of our clients.

Van Care offers solutions for every type of commercial vehicle.

We work with lightweight modular equipment and provide tailor-made solutions. The modular construction allows you to put together your ideal interior with the exact shelves, drawers and spaces you need.

Thanks to an extensive network of specialized dealers, we can deliver fully customized Van Racking. Kits tailored specifically to your needs. Feel free to contact us for more information and an introductory conversation.



THE BEST
QUALITY



FREE
CONSULTANCY



COST REDUCTION

SAFETY & QUALITY ARE OUR MAIN GOALS

VAN CARE PRODUCTS

Van Care products are innovative, lightweight and durable. All products are made of ultra-high strength materials, resulting in minimal weight and maximum loading capacity.

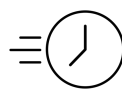
All Van Care's Van Racking Kits are tested extensively. Crash tests are continuously being carried out at specialized research centers.

Simulation, load capacity and vibration tests are continuously researched and performed.

Time and time again our products have proven to be extremely safe. Take these results from one of our frontal impact tests for example.

PROVEN QUALITY OF OUR PRODUCTS

Van Care guarantees optimal safety, today and in the future. Everything is made for functional use and safety during work and transport. The production is fully certified and complies to ISO 9001:2015 and TÜV requirements.



TIME
SAVING



PERSONALIZED
PROJECTS



GREAT
TESTS RESULTS



ABOUT B_LINE

This line provides a solid basis for an efficiently organized vehicle. The B-line is seen as the baseline in the field of Van Racking Kits.

The line is more affordable than our M-line, but with the same durability and functional capabilities. Thanks to the innovative design and the use of various high-quality materials, this system is an ideal installation system predominantly designed for Small & Medium Vans.

The various parts are made of high-quality steel and are finished with a powder coating layer.

Thanks to the type of steel used, this line is a very durable product line. The products are neatly finished for a sleek appearance.





EFFORTLESS SELF-INSTALLATION

COMPREHENSIVE INSTRUCTIONS

Each B_line module comes with a detailed instruction manual to guide you through the assembly process step by step.

INSTRUCTIONAL VIDEOS

We provide instructional videos to further simplify the installation, ensuring you have visual support at every stage.

COLOR-CODED COMPONENTS

All components are marked with color-coded points, making it easy to identify and assemble each part correctly.

USER-FRIENDLY DESIGN

Our modules are designed for easy self-installation, allowing you to set up your van efficiently and with confidence.

OUR BASIC MODULES



BM 950-3

75-3-050-00

Dimensions: 0507x360x980mm

Weight: 15,32kg

Distributed load per shelf: 40kg

Box qty: 1pcs



BM 970-3

75-3-050-01

Dimensions: 0760x360x980mm

Weight: 18,3kg

Distributed load per shelf: 40kg

Box qty: 1pcs



BM 910-3

75-3-050-02

Dimensions: 1014x360x980mm

Weight: 21,3kg

Distributed load per shelf: 40kg

Box qty: 1pcs



BM 912-3

75-3-050-06

Dimensions: 1267x360x980mm

Weight: 25kg

Distributed load per shelf: 40kg

Box qty: 1pcs

BM 950-23L

75-3-050-03

Dimensions: 0507x360x980mm
Weight: 15,32kg
Distributed load per shelf: 40kg
Distributed load per drawer: 50kg
Box qty: 1pcs



BM 950-23K

75-3-050-04

Dimensions: 0760x360x980mm
Weight: 18,3kg
Distributed load per shelf: 40kg
Distributed load per case: 15kg
Box qty: 1pcs



BM 910-13L

75-1-050-03

Dimensions: 1014x360x980mm
Weight: 21,3kg
Distributed load per shelf: 40kg
Distributed load per drawer: 50kg
Box qty: 2pcs



BM 910-134

75-1-050-04

Dimensions: 1014x360x980mm
Weight: 50,6kg
Distributed load per shelf: 40kg
Distributed load per drawer: 50kg
Distributed load per case: 15kg
Box qty: 3pcs



BM 912-134

75-1-050-04

Dimensions: 1267x360x980mm
Weight: 59,7kg
Distributed load per shelf: 40kg
Distributed load per drawer: 50kg
Distributed load per case: 15kg
Box qty: 3pcs



OPTIONAL B_LINE MODULE EXTENSIONS



BM 950-1

75-1-050-00

Dimensions: 0507x260x245mm

Weight: 3,5kg

Distributed load per shelf: 40kg

Box qty: 1pcs



BM 970-1

75-1-050-01

Dimensions: 0760x260x245mm

Weight: 4,3kg

Distributed load per shelf: 40kg

Box qty: 1pcs



BM 910-1

75-1-050-02

Dimensions: 1014x260x245mm

Weight: 5,15kg

Distributed load per shelf: 40kg

Box qty: 1pcs



BM 912-1

75-1-050-07

Dimensions: 1267x260x245mm

Weight: 5,9kg

Distributed load per shelf: 40kg

Box qty: 1pcs



IT'S STACKABLE!

These extensions can be easily stacked to achieve your desired height, maximizing the storage capacity and ensuring an efficient use of space.



ACCESSORIES



BBS 1267.0360

75-3-007-03
Weight: 3kg
For 1267mm shelf
Box qty: 1pcs



BBS 1014.0360

75-3-007-02
Weight: 2,07kg
For 1014mm shelf
Box qty: 1pcs



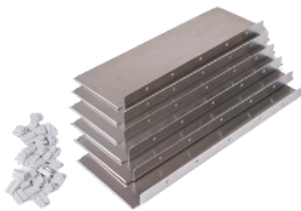
BBS 0760.0360

75-3-007-01
Weight: 1,6kg
For 760mm shelf
Box qty: 1pcs



BBS 0507.0360

75-3-007-00
Weight: 1,13kg
For 507mm shelf
Box qty: 1pcs



ADBP 0360

75-3-099-00
DIVIDERS SET FOR
DRAWERS
Weight: 0,2kg
Set: 6pcs dividers with mounting
blocks



ADBTTSP 0360

75-3-108-00
DIVIDERS SET FOR SHELFs
Weight: 0,2kg
Set: 6pcs dividers with mounting
blocks



BAS

75-3-101-00 BAS05 507MM
LENGTH
75-3-102-00 BAS07 760MM
LENGTH
75-3-103-00 BAS10 1014MM
LENGTH
75-3-104-00 BAS12 1267MM
LENGTH



OPTIONAL B_LINE HOLDERS



BHR

75-0-040-00

Holder for hoses

Dimensions: 110x100x226mm

Weight: 0,3kg



BSCH003

75-0-130-00

Can holder (max 74mm)

Dimensions: 165x271x115mm

Weight: 0,6kg



BSKH004

75-0-150-00

Can holder (max 54mm)

Dimensions: 215x240x117mm

Weight: 0,7kg



BAR WITH SLIDABLE CLAMB

**BFPC
1014.360**

**Fixation Part
for Cases**

75-3-110-12

Weight: 3kg
For 1014mm shelf
Box qty: 1pcs



FIT FOR:

BM 910-134

BM 910-13L



**BFPC
1267.360**

**Fixation Part
for Cases**

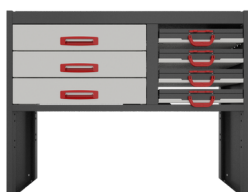
75-3-135-12

Weight: 3,4kg
For 1267mm shelf
Box qty: 1pcs



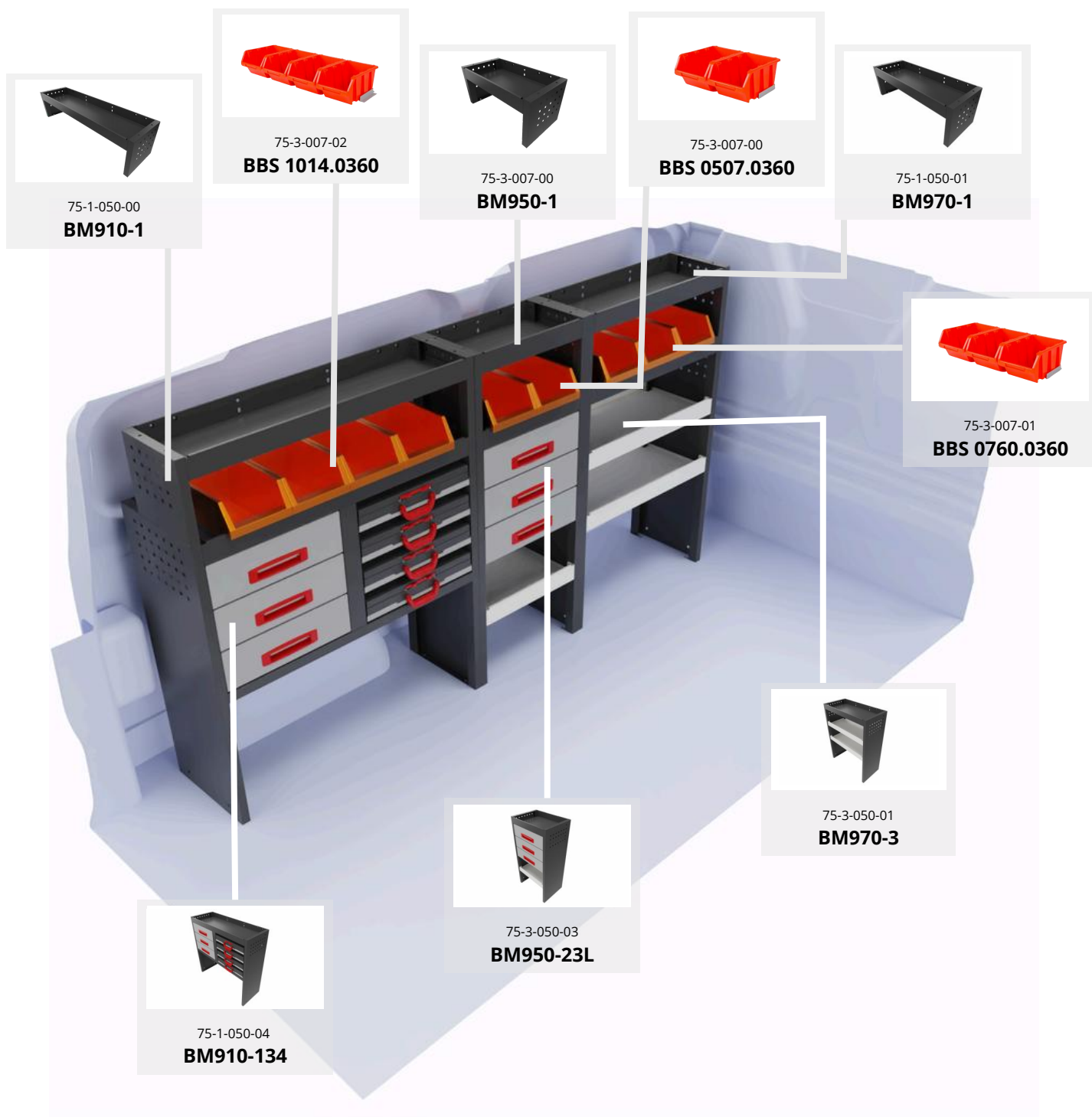
FIT FOR:

BM 912-134



BUILD YOUR PERFECT KIT

B_line modules are designed for easy integration and versatility. Each module can be seamlessly connected to another, allowing you to create a tailored storage solution that fits your specific needs. Every package includes a set of screws, ensuring you have everything required to effortlessly combine the modules. This straightforward assembly process ensures a secure and stable setup, giving you a reliable and customizable storage system.



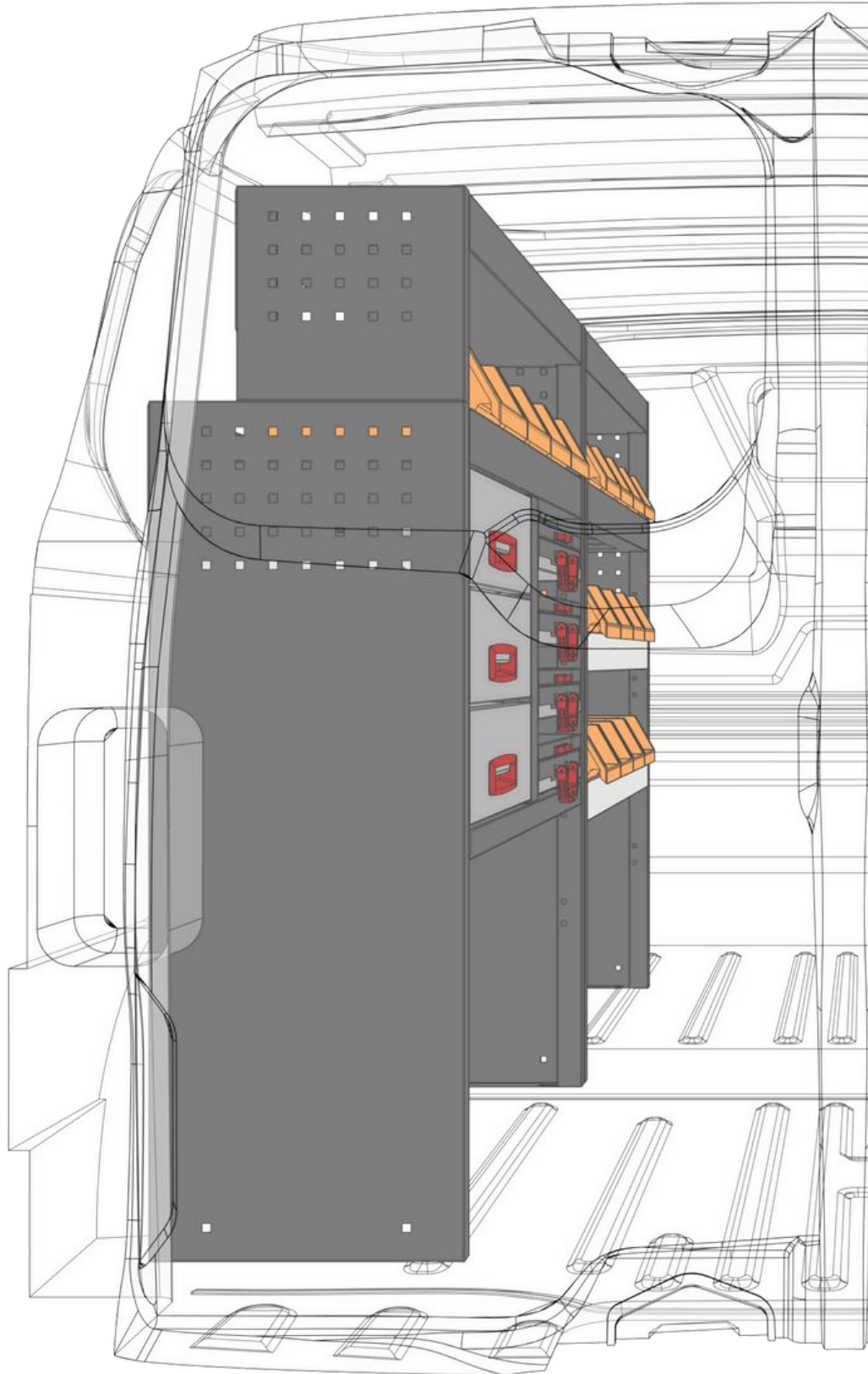
EASY INSTALLATION GUARANTEED



SCAN ME!
B_line video tutorials

Assembling your dream van setup has never been easier with our B_line video tutorials. Our step-by-step guides walk you through the entire process, ensuring a smooth and straightforward installation.

Whether you're a seasoned professional or a first-time installer, our videos provide clear instructions and helpful tips to help you achieve the perfect setup with ease.



To make the assembly process as simple as possible, we have minimized the need for tools. With just a few basic tools, you can easily install your B_line modules.

You will need:

A power drill,

Two 13mm wrenches,

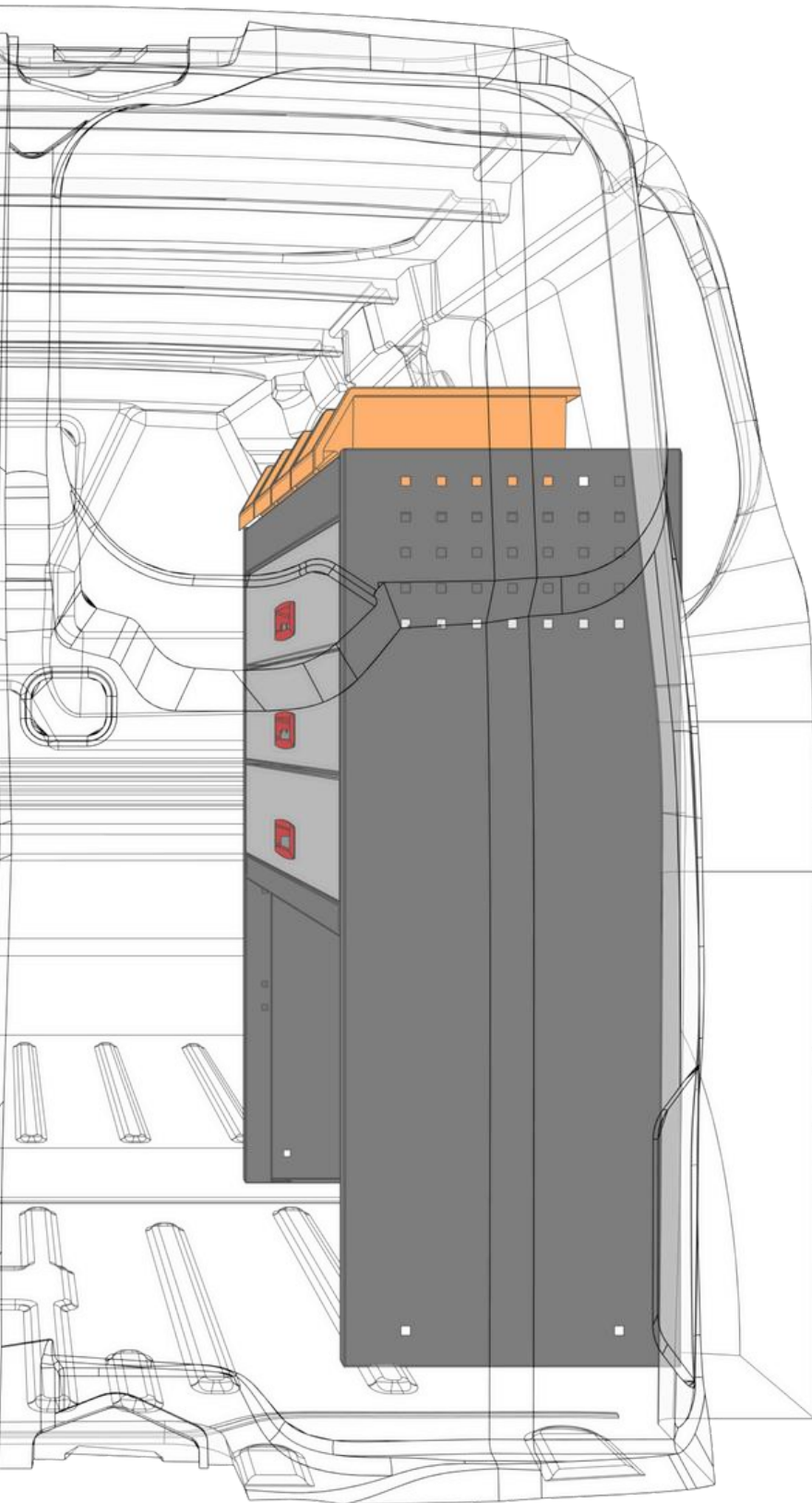
A 10mm drill bit,

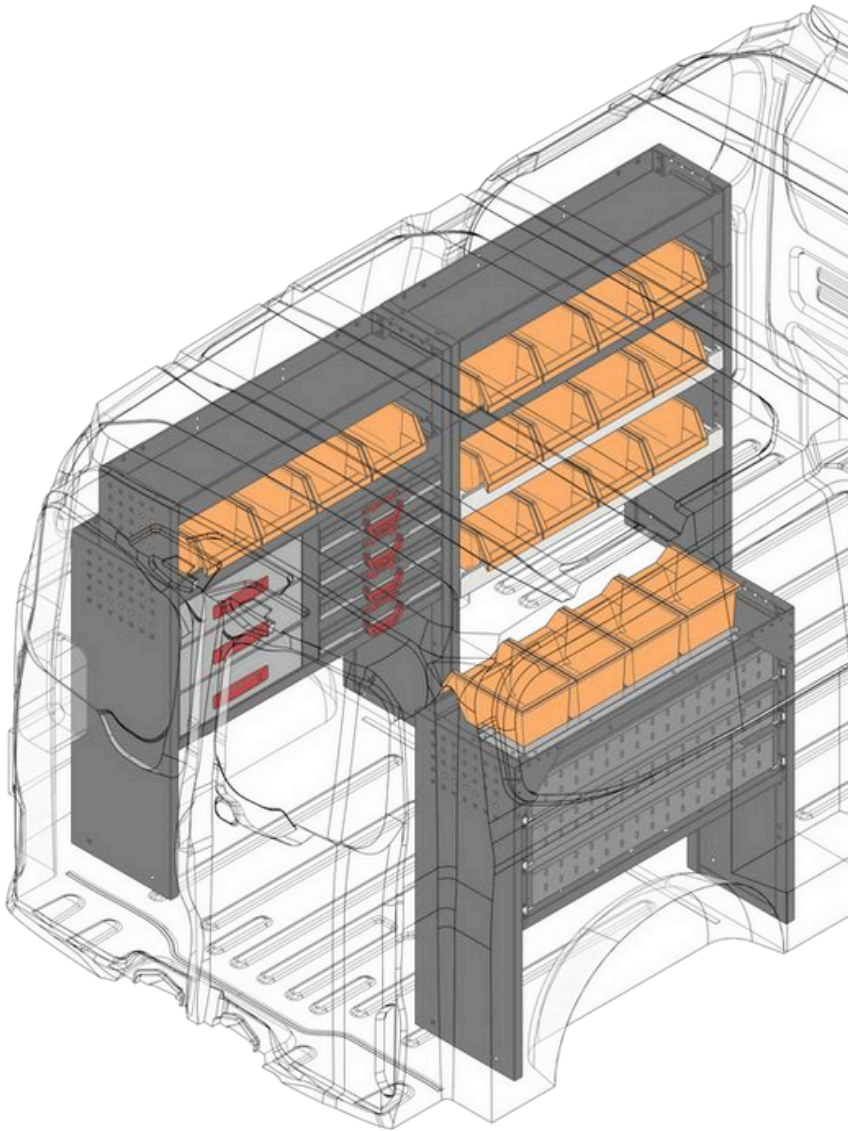
An 8mm Allen key.



SCAN ME!
B_line instruction

Every B_line module comes with a detailed instruction manual and technical data sheet, ensuring you have all the information you need for a successful installation. Our comprehensive guides provide step-by-step directions, along with important specifications, to help you confidently assemble and integrate each module into your van setup. With clear and concise instructions, achieving a professional and functional layout is easier than ever.





Polychemstraat 14 6191NL Beek
(Limburg) Netherlands
Phone number: 0031 6 2952 3900
www.van-care.com

B_line January 2026